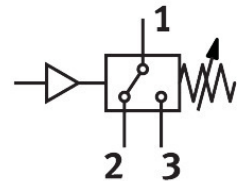
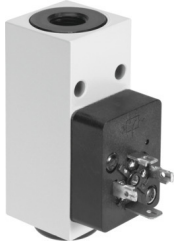


# Pressure switch PEV-1/4-B-OD

Part number: 175250

**FESTO**



[PDF General operating condition](#)

## Data sheet

| Feature                                    | Value  |
|--|--|
| Conforms to standard                       | EN 60947-5-1   |
| Symbol                                     | 00991471   |
| Approval                                   | CCC  |
| CE mark (see declaration of conformity)    | To EU Low Voltage Directive  |
| CE marking (see declaration of conformity) | To UK regulations for electrical equipment   |
| Explosion protection                       | The information in the certificate must be observed!<br>Zone 1 (ATEX)<br>Zone 2 (ATEX)<br>Zone 21 (ATEX)<br>Zone 22 (ATEX) |
| Note on materials                          | RoHS-compliant   |
| Measured variable                          | Relative pressure  |
| Measurement method                         | Pneumatic/electric pressure transducer   |
| Operating pressure                         | 0.1 MPa ... 1.2 MPa  |
| Operating pressure                         | 1 bar ... 12 bar   |
| Operating medium                           | Compressed air to ISO 8573-1:2010 [7:::]<br>Water  |
| Note on operating and pilot medium         | Lubricated operation possible (in which case lubricated operation will always be required)                                 |
| Media temperature                          | -20 °C ... 80 °C   |
| Ambient temperature                        | -20 °C ... 80 °C   |
| Switching element function                 | Changeover switch  |
| Max. switching frequency                   | 3 Hz   |
| Max. switching output voltage AC           | 250 V  |
| Max. switching output voltage DC           | 125 V  |
| Max. output current                        | 5000 mA  |
| Min. load current                          | 1 mA at 24 V<br>10 mA at 10 V<br>100 mA at 5 V   |
| Utilisation category - inductive load      | AC-14<br>DC-13   |
| Utilisation category - resistive load      | AC-12<br>DC-12   |
| Electrical connection                      | Type A<br>Plugs<br>To DIN 43650<br>Square design   |

| Feature                        | Value                         |
|--------------------------------|-------------------------------|
| Type of mounting               | With through-hole             |
| Mounting position              | optional                      |
| Pneumatic connection           | G1/4                          |
| Product weight                 | 194 g                         |
| Material housing               | Die-cast aluminium            |
| Material switch contact        | Silver                        |
| Switching status indication    | Yellow LED                    |
| Setting range threshold value  | 1 bar ... 12 bar              |
| Degree of protection           | IP65                          |
| Corrosion resistance class CRC | 2 - Moderate corrosion stress |
| LABS (PWIS) conformity         | VDMA24364-B1/B2-L             |