



HER201/UF2001 THRU HER208/UF2007

2.0 AMPS. HIGH EFFICIENT RECTIFIERS

Voltage Range
50 to 1000 Volts
Current
2.0 Amperes

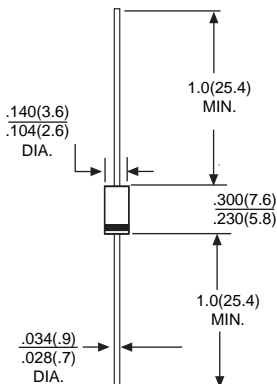
Features

- *Low forward voltage drop
- *High current capability
- *High reliability
- *High surge current capability

Mechanical Data

- *Cases: Molded plastic
- *Epoxy: UL 94V-O rate flame retardant
- *Lead: Axial leads, solderable per MIL-STD-202, Method 208 guaranteed
- *Polarity: Color band denotes cathode end
- *High temperature soldering guaranteed:
250°C/10 seconds/.375", (9.5mm) lead lengths at 5 lbs., (2.3kg) tension
- *Weight: 0.40 grams

DO-15



Dimensions in inches and (millimeters)

MAXIMUM RATINGS AND ELECTRICAL CHARACTERISTICS

Rating at 25°C ambient temperature unless otherwise specified.
Single phase, half wave, 60Hz, resistive or inductive load.
For capacitive load, derate current by 20%

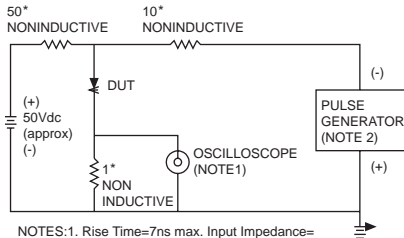
Type Number		HER201 UF2001	HER202 UF2002	HER203 UF2003	HER204	HER205 UF2004	HER206 UF2005	HER207 UF2006	HER208 UF2007	UNITS
Maximum Repetitive Peak Reverse Voltage	V _{RRM}	50	100	200	300	400	600	800	1000	V
Maximum RMS Voltage	V _{RMS}	35	70	140	210	280	420	560	700	V
Maximum DC Blocking Voltage	V _{DC}	50	100	200	300	400	600	800	1000	V
Maximum Average Forward Rectified Current .375" (9.5mm) Lead Length @ T _A = 55°C	I _{F(AV)}	2.0								A
Peak Forward Surge Current, 8.3 ms Single Half Sine-wave Superimposed on Rated Load (JEDEC method)	I _{FSM}	60								A
Maximum Instantaneous Forward Voltage @ 2.0A	V _F	1.0			1.3		1.7			V
Maximum DC Reverse Current @ T _A = 25°C at Rated DC Blocking Voltage @ T _A = 100°C	I _R	5.0 100								uA uA
Maximum Reverse Recovery Time (Note 1)	T _{RR}	50				75				nS
Typical Junction Capacitance (Note 2)	C _J	50				30				pF
Operating Temperature Range	T _J	-55 to +125								°C
Storage Temperature Range	T _{STG}	-55 to +150								°C

NOTES: 1. Reverse Recovery Test Conditions: I_F=0.5A, I_R=1.0A, I_{RR}=0.25A
2. Measured at 1 MHz and Applied Reverse Voltage of 4.0 V D.C.

RATING AND CHARACTERISTIC CURVES HER201/UF2001 THRU HER208/UF2007



FIG.1- REVERSE RECOVER TIME CHARACTERISTIC AND TEST CIRCUIT DIAGRAM



NOTES:1. Rise Time=7ns max. Input Impedance=1 megohm 22pf
2. Rise Time=10ns max. Source Impedance=50 ohms

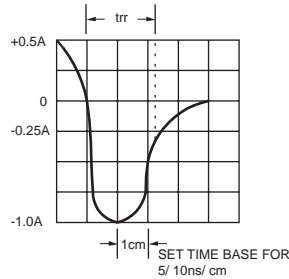


FIG.2-MAXIMUM AVERAGE FORWARD CURRENT DERATING

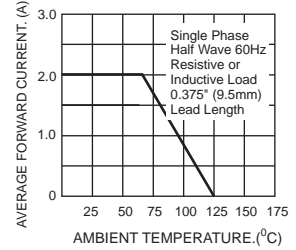


FIG.3-TYPICAL REVERSE CHARACTERISTICS

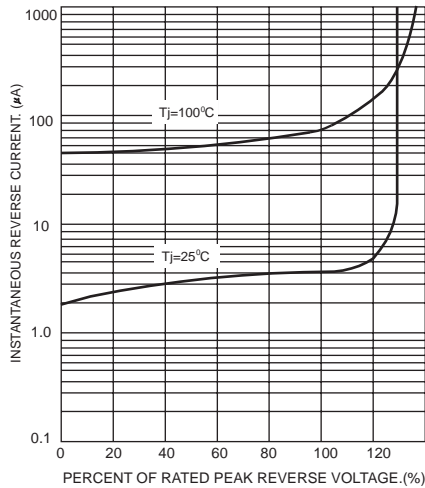


FIG.4-TYPICAL FORWARD CHARACTERISTICS

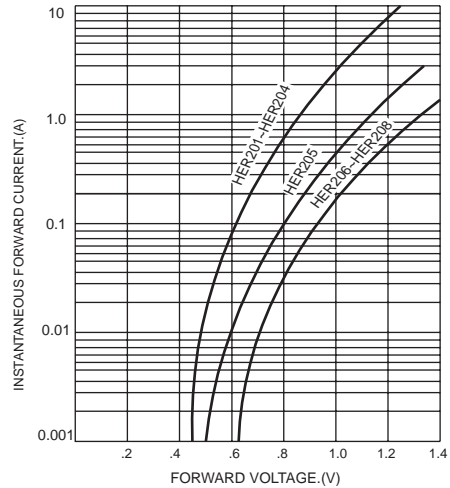


FIG.5-MAXIMUM NON-REPETITIVE SURGE CURRENT

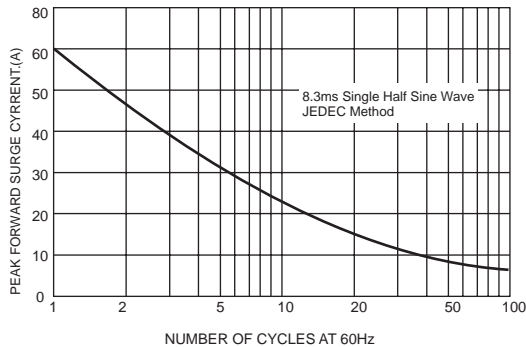


FIG.6-TYPICAL JUNCTION CHARACTERISTICS

