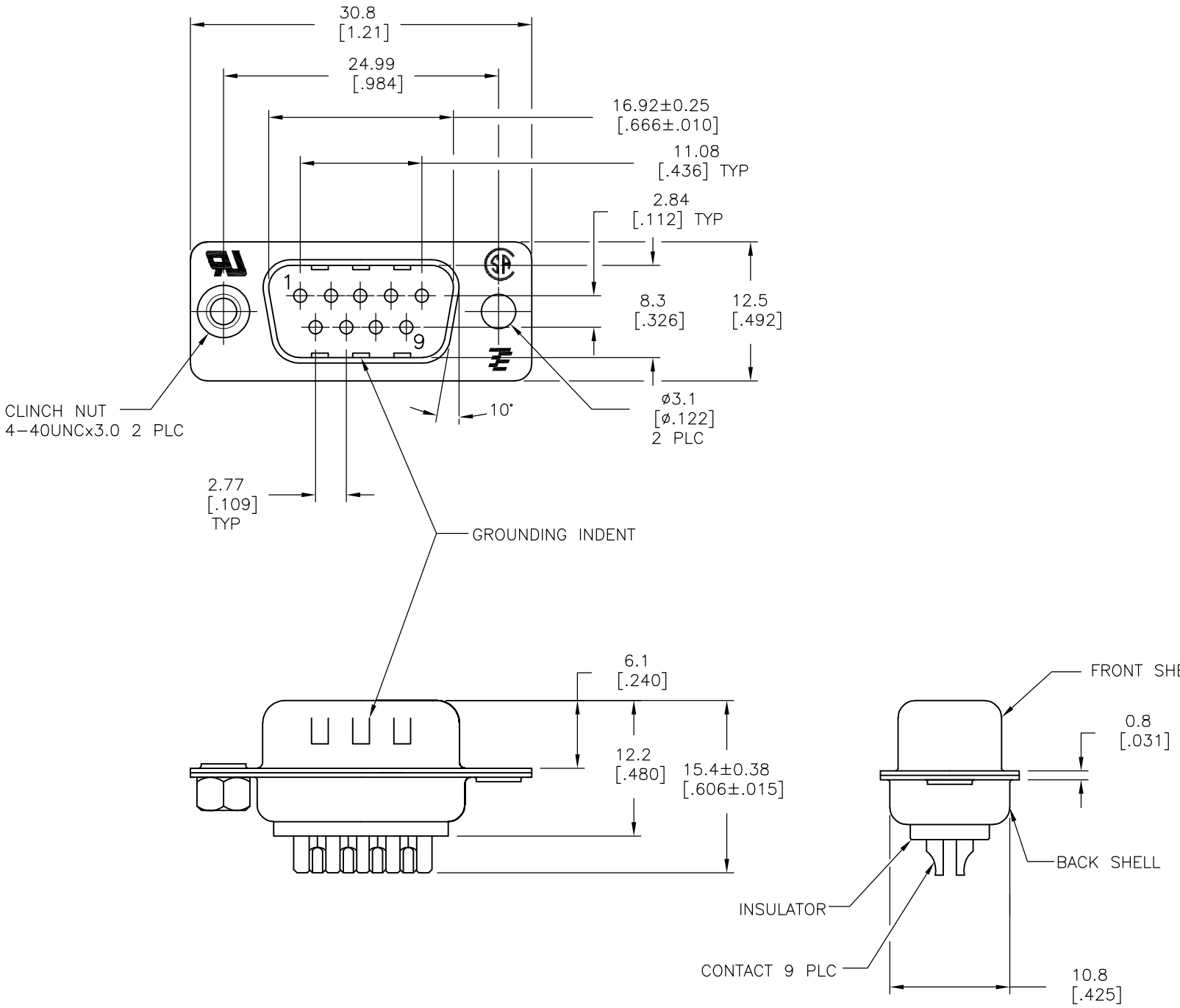


| LOC | DIST | REVISIONS | | | | | |
|-----|------|-----------|-----|---------------------------|-----------|-----|------|
| GP | 00 | P | LTR | DESCRIPTION | DATE | DWN | APVD |
| | | | AA | REVISED PER ECO-15-010090 | 16JUL2015 | AP | DG |



- 1 MATERIAL:
 FRONT INSULATOR: PBT, 30 %GF, UL94V-0, BLACK COLOR
 BACK INSULATOR: PBT, 30 %GF, UL94V-0, BLACK COLOR
 CONTACT: BRASS
 FRONT & BACK SHELL: STEEL
 CLINCH NUTS: BRASS
- 2 FINISH:
 CONTACT: GOLD PLATING 0.00002[.0000008] MIN ON CONTACT AREA 0.00229 [.000090] MIN TIN-LEAD PLATING ALL OVER 0.00127[.000050] MIN NICKEL
- 3 CONTACT: GOLD PLATING 0.00076[.000030] MIN ON CONTACT AREA 0.00229 [.000090] MIN TIN-LEAD PLATING ALL OVER 0.00127[.000050] MIN NICKEL
- 4 SHELL: BRIGHT TIN 0.00241[.000095] MIN FULL SHELL
- 5 SHELL: BLUE ZINC: 0.00508[.000200] - 0.00762[.000300] OVER ENTIRE SHELL
- 6 CONTACT: GOLD PLATING 0.00002[.0000008] MIN ON CONTACT AREA 0.00229 [.000090] MIN HOT DIPPED TIN-COPPER PLATING ALL OVER 0.00127[.000050] MIN NICKEL
- 7 CLINCH NUTS: NICKEL PLATING .00305-.00508[.000120-.000200]
- 8 SPECIFICATION
 ELECTRICAL CHARACTERISTICS: CURRENT RATING: 3 AMPERES
 DIELECTRIC WITHSTANDING VOLTAGE: AC 1000V r.m.s
 INSULATION RESISTANCE: 5000 MEGOHMS MINIMUM AT DC 500V
 CONTACT RESISTANCE: 10 MILLIOHMS MAXIMUM.
- 9 ROHS 2002/95/EC/COMPLIANT
- 10 PLUG ASSEMBLY MATES WITH ANY 9 POSITION RECEPTACLE IN AMPLIMITE SERIES.
- 11 SOLDER CUP WILL ACCOMODATE 20 AWG MAX WIRE
- 12 CONTACT: GOLD PLATING 0.00076[.000030] MIN ON CONTACT AREA 0.00229[.000090] MIN HOT DIPPED TIN-COPPER ALL OVER 0.00127[.000050] MIN NICKEL PLATING

| | | | | | | | |
|---|----------|----------|-----|-----|---|---|------------|
| 9 | OBsolete | STANDARD | NO | NO | 6 | 4 | 5-747904-4 |
| | | | | | | | |
| | | | | | | | |
| | | | | | | | |
| | | | | | | | |
| | | | | | | | |
| | | | | | | | |
| | | | | | | | |
| 9 | OBsolete | STANDARD | NO | YES | 6 | 4 | 747904-9 |
| | OBsolete | STANDARD | YES | YES | 2 | 4 | 747904-8 |
| | OBsolete | STANDARD | NO | YES | 3 | 4 | 747904-5 |
| | OBsolete | STANDARD | NO | NO | 2 | 5 | 747904-4 |
| | OBsolete | STANDARD | NO | YES | 2 | 4 | 747904-2 |

| | | | | | | |
|------------------|---|---------------|-------------------|-----------|--------|------------|
| PACKAGING TYPE | 7 | CLINCH NUTS | GROUNDING INDENTS | CONTACTS | SHELLS | PART NO. |
| DWN | | M.BINNER | 03MAR03 | | | |
| CHK | | R.BENDORF | 05MAR03 | | | |
| APVD | | R.BENDORF | 05MAR03 | | | |
| PRODUCT SPEC | NAME | | | | | |
| APPLICATION SPEC | PLUG ASSY, SOLDER CUP, SIZE 1, 9 POSN, HD-20, AMPLIMITE | | | | | |
| WEIGHT | --- | SIZE | A3 | CAGE CODE | 00779 | DRAWING NO |
| CUSTOMER DRAWING | | RESTRICTED TO | --- | | | |
| SCALE | | 2:1 | | SHEET | | 1 OF 1 |
| REV | | AA | | REV | | AA |

THIS DRAWING IS A CONTROLLED DOCUMENT.
 DIMENSIONING AND TOLERANCING PER ASME Y14.5M-2009

| DIMENSIONS: | TOLERANCES UNLESS OTHERWISE SPECIFIED: |
|-------------|--|
| mm | |
| 0 PLC | ± - |
| 1 PLC | ± 0.25 |
| 2 PLC | ± 0.13 |
| 3 PLC | ± 0.05 |
| 4 PLC | ± - |
| ANGLES | ± 4° |

MATERIAL: 1

FINISH: SEE TABLE



PLUG ASSY, SOLDER CUP, SIZE 1,
 9 POSN, HD-20, AMPLIMITE

Mouser Electronics

Authorized Distributor

Click to View Pricing, Inventory, Delivery & Lifecycle Information:

[TE Connectivity:](#)

[5-747904-2](#)