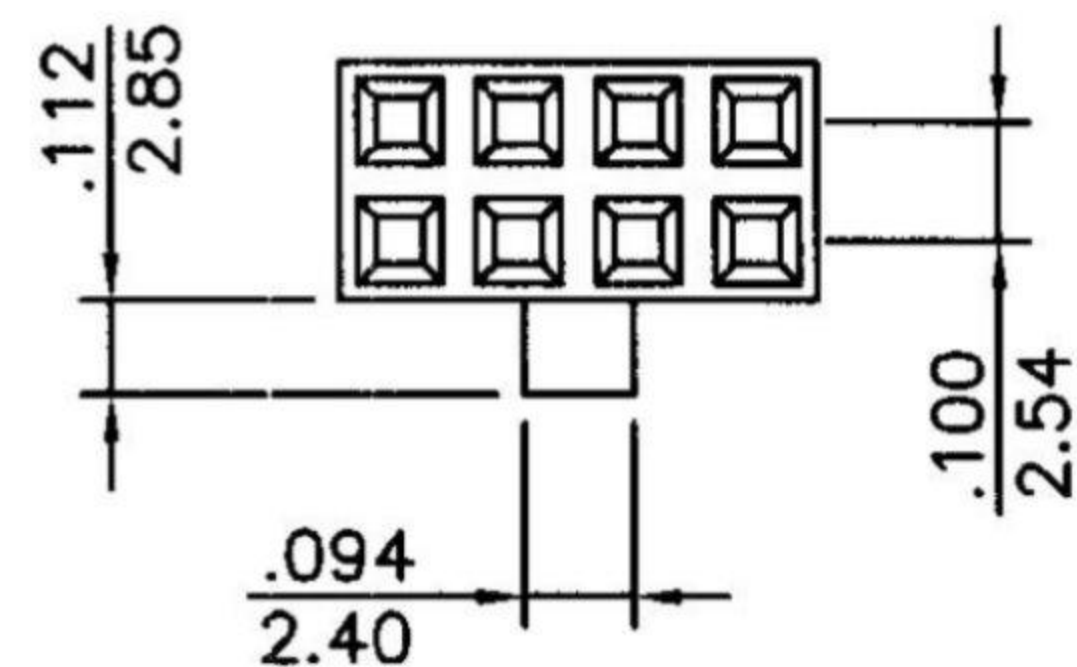
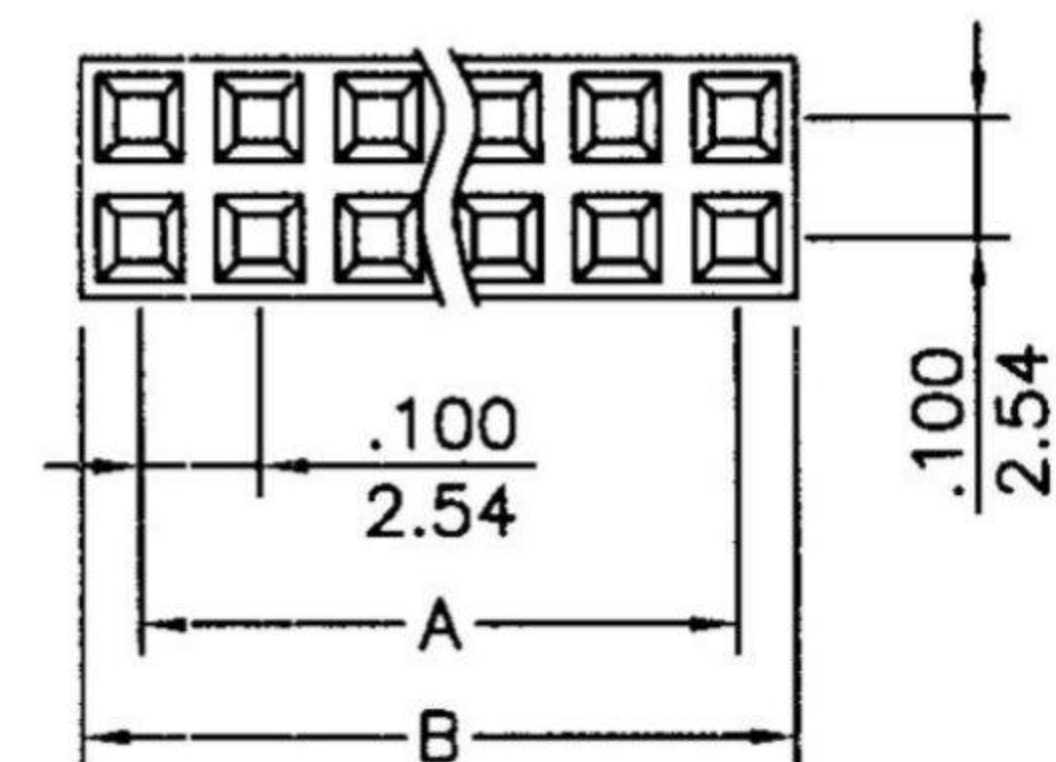


PN: H4000-XXPDNB00R

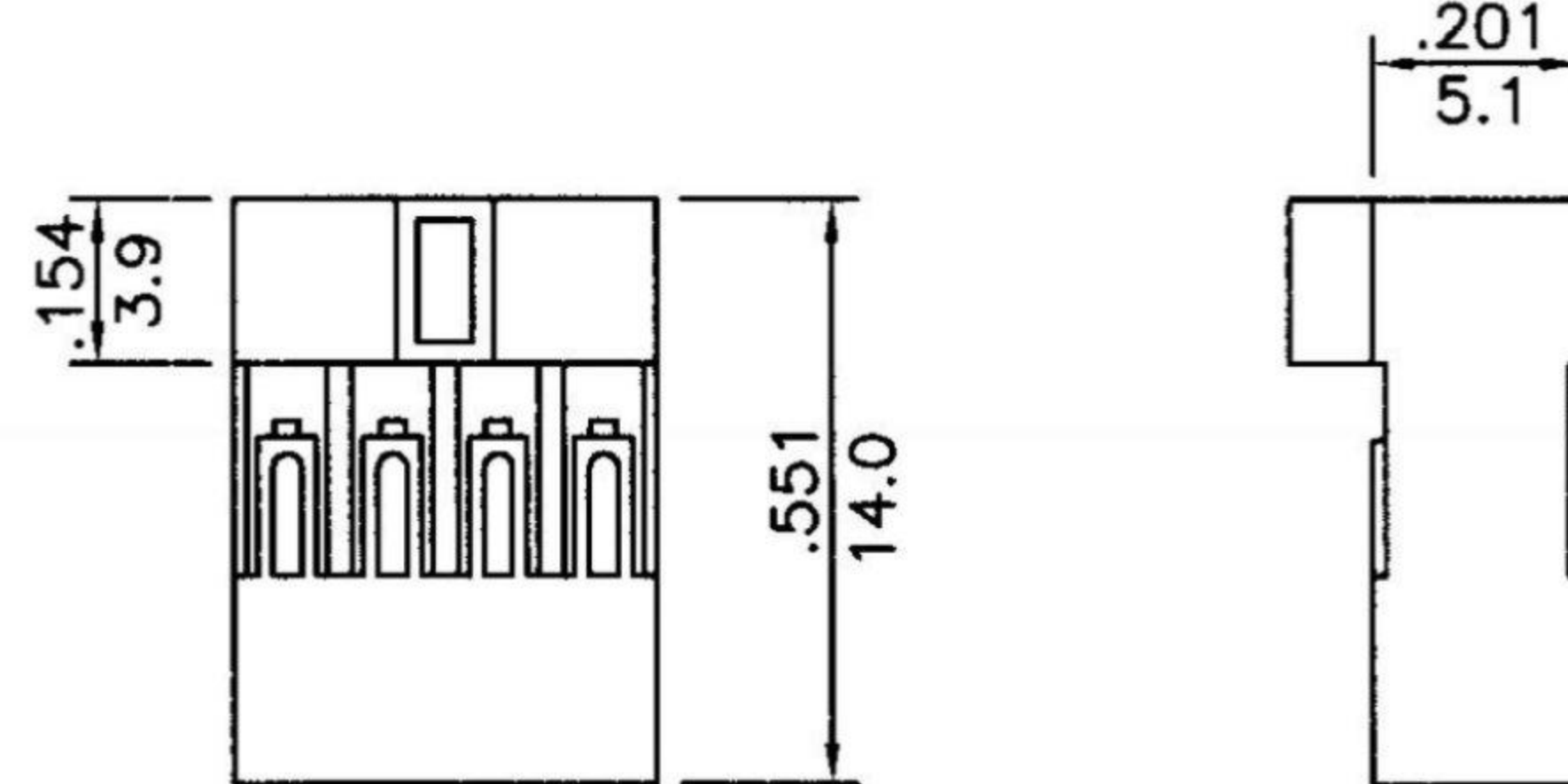
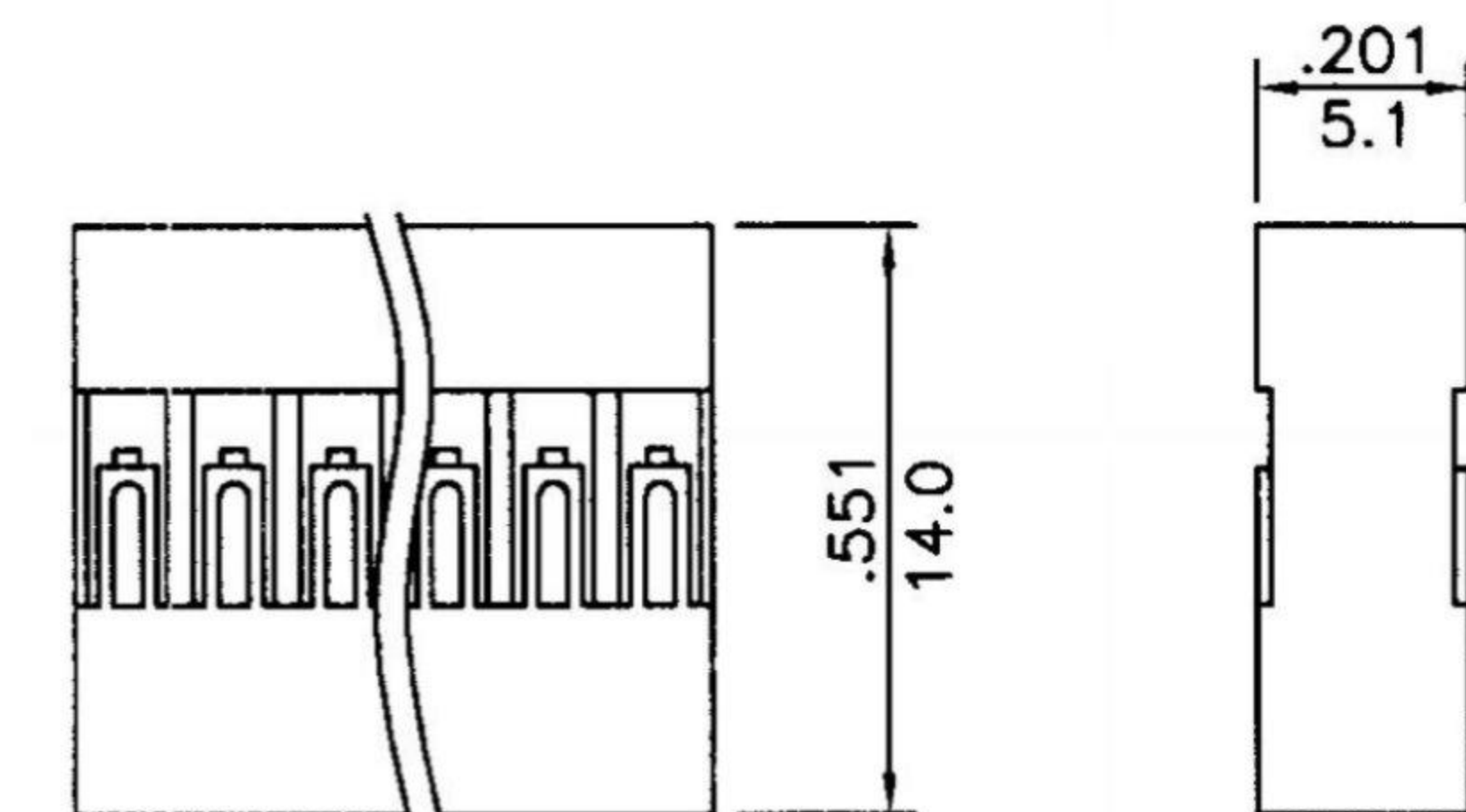
PN: H4000-XXPDYB00R

H 4000 — 02 P S N B 0 0 R  
 1 2 3 4 5 6 7 8 9 10

- |   |  |                                |
|---|--|--------------------------------|
| 1. PRODUCTS:<br>H:Housing   | 4. CONTACT TYPE:<br>P:Non Distribution                     | 7. INSULATOR COLOR:<br>B:Black |
| 2. SERIES NO.:<br>4000  | 5. ROW TYPE:<br>S:Single Row<br>D:Dual Rows                | 8. FILL IT WITH "0"            |
| 3. CONTACT NO.:<br>01-30(Single Row)<br>04(2x2)-80(2x40)<br>(Dual Rows) | 6. BODY OPTION:<br>Y:W/ Bump(Dual Rows Only)<br>N:W/O Bump | 9. FILL IT WITH "0"            |
|   |  | 10. R:ROHS                     |

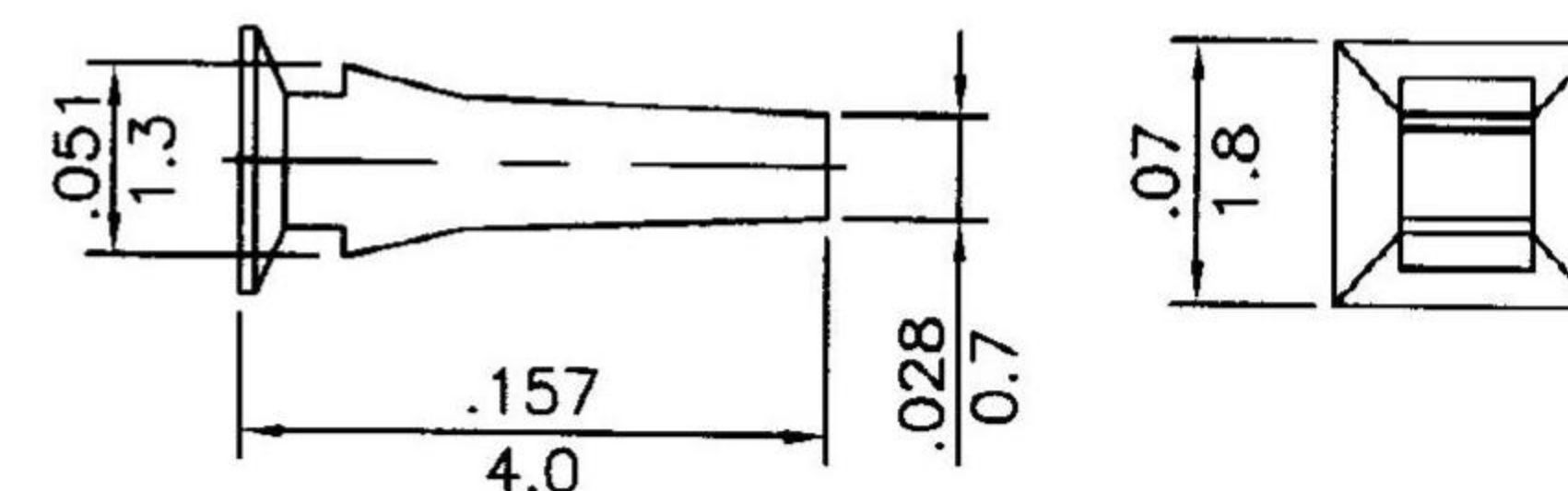


inches  
mm



PN: H4000-KAX00000R

Polarizing Plug



CIRCUITS	DIMENSION in.(mm)		CIRCUITS	DIMENSION in.(mm)	
	A	B		A	B
4	0.100(2.54)	0.200(5.08)	44	2.100(53.34)	2.200(55.88)
6	0.200(5.08)	0.300(7.62)	46	2.200(55.88)	2.300(58.42)
8	0.300(7.62)	0.400(10.16)	48	2.300(58.42)	2.400(60.96)
10	0.400(10.16)	0.500(12.70)	50	2.400(60.96)	2.500(63.50)
12	0.500(12.70)	0.600(15.24)	52	2.500(63.50)	2.600(66.04)
14	0.600(15.24)	0.700(17.78)	54	2.600(66.04)	2.700(68.58)
16	0.700(17.78)	0.800(20.32)	56	2.700(68.58)	2.800(71.12)
18	0.800(20.32)	0.900(22.86)	58	2.800(71.12)	2.900(73.66)
20	0.900(22.86)	1.000(25.40)	60	2.900(73.66)	3.000(76.20)
22	1.000(25.40)	1.100(27.94)	62	3.000(76.20)	3.100(78.74)
24	1.100(27.94)	1.200(30.48)	64	3.100(78.74)	3.200(81.28)
26	1.200(30.48)	1.300(33.02)	66	3.200(81.28)	3.300(83.82)
28	1.300(33.02)	1.400(35.56)	68	3.300(83.82)	3.400(86.36)
30	1.400(35.56)	1.500(38.10)	70	3.400(86.36)	3.500(88.90)
32	1.500(38.10)	1.600(40.64)	72	3.500(88.90)	3.600(91.44)
34	1.600(40.64)	1.700(43.18)	74	3.600(91.44)	3.700(93.98)
36	1.700(43.18)	1.800(45.72)	76	3.700(93.98)	3.800(96.52)
38	1.800(45.72)	1.900(48.26)	78	3.800(96.52)	3.900(99.06)
40	1.900(48.26)	2.000(50.80)	80	3.900(99.06)	4.000(101.60)
42	2.000(50.80)	2.100(53.34)	100	4.900(124.46)	5.000(127.00)

- \* Poles:4-80
  - \* Material:NORYL UL 94-V1 ,BLACK
- Specifications
- \* Current rating: 3A AC, DC
  - \* Voltage rating: 250V AC, DC
  - \* Temperature range: -25°C~+85°C
  - \* Insulation resistance: 1,000MΩ min.
  - \* Withstand voltage: 1000V AC/minute

RoHS Compliant	<b>HSM</b> 玄茂科技股份有限公司 HSUAN MAO TECHNOLOGY CO., LTD.	
APPD. 核准 HELEN	TOLERANCE 容許公差 .0 ± .00 ± ANG. ±	PART NAME 品名 2.54mm HOUSING DUAL ROW 2XXXP BLACK COLOR ROHS
DWG. 製圖 ABBY	SCALE 比例 參考	PART NO. 料號 H4000-XXPDXB00R
DATE 制表日 2015/12/16	UNIT 單位 MM	SIZE. 紙張尺寸 A4
	PAGE 張數 1 OF 1	REV. 版次 B