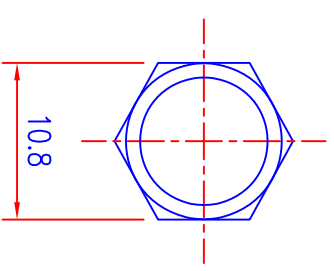


NUT



WASHER

F DOUBLE FEMALE(F-81)

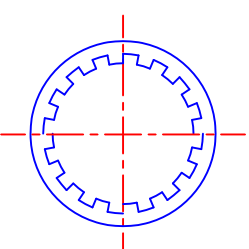
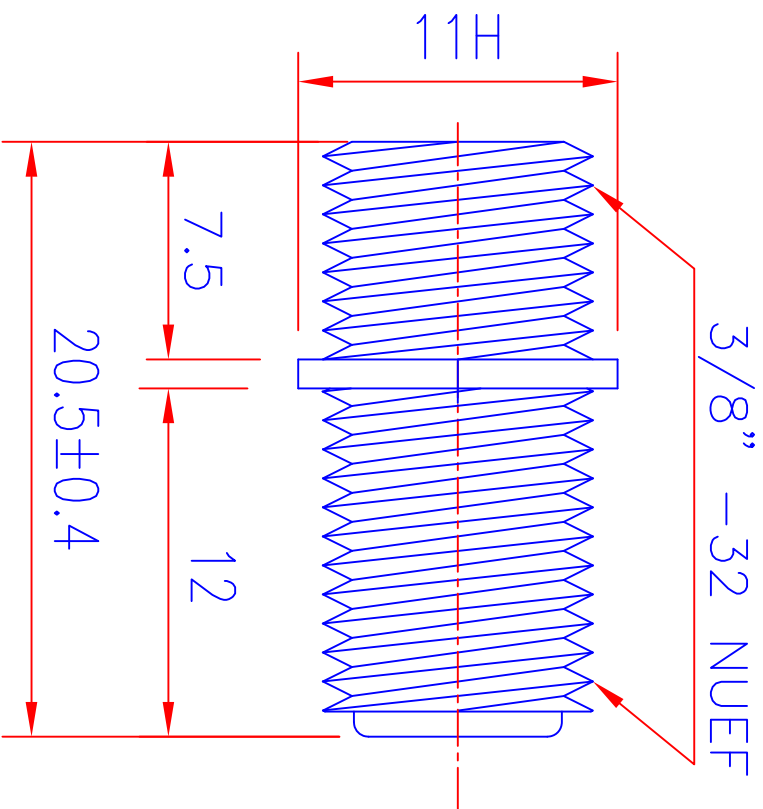
UNLESS OTHERWISE SPECIFIED  
GENERAL TOLERANCES

0.5~6 =  $\pm 0.2$   
 >6~30 =  $\pm 0.4$   
 >30~120 =  $\pm 0.6$

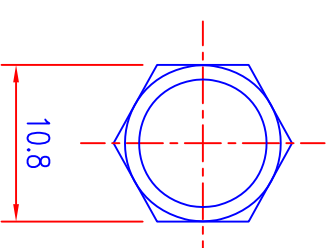
NO.	DESCRIPTION	QTY	MATERIAL	SPECIFICATION	REMARK
DRAW BY	CHUN	070909	1 : 4	PROJ	TL4383-21+NW
DEGN BY	YANG				
APPD BY	RAY		MM		N CONNECTOR

DATE	DRAWG BY	REVISED	同利企業有限公司	TELE LONG ENTERPRISE CO.,LTD	DRAWING NO.	TL4383-21+NW-TN06-A1
------	----------	---------	----------	------------------------------	-------------	----------------------

TL4383-2-BDNN+NGW: WITH NUT , GEAR WASHER  
 TL4383-2-BDNN: WITHOUT NUT , GEAR WASHER  
 BODY: BRASS



GEAR WASHER



NUT

F DOUBLE FEMALE(F-81)

UNLESS OTHERWISE SPECIFIED  
 GENERAL TOLERANCES

0.5~6 = ±0.2  
 >6~30 = ±0.4  
 >30~120 = ±0.6

NO.	DESCRIPTION	QTY	MATERIAL	SPECIFICATION	REMARK
DRAW BY	CHUN	0522510	1 : 4	PROJ	ITEM NO. TL4383-2-BDNN+NGW
DEGN BY	YANG		MM		TITLE F CONNECTOR
APPD BY	RAY	UNIT			REMARK TL4383-2-BDNN+NGW -CN19-A1

同利企業有限公司

TELE LONG ENTERPRISE CO.,LTD

DATE	DRAWG BY	REVISED