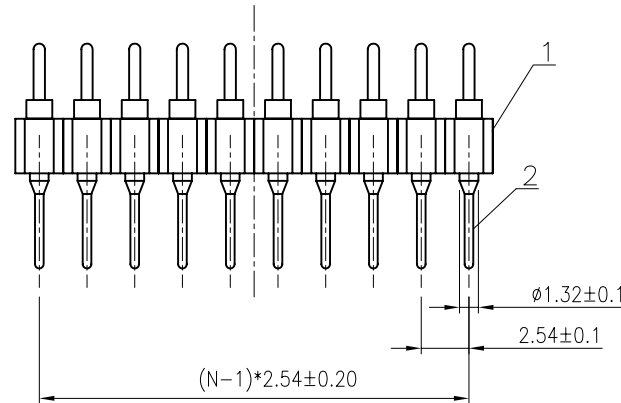
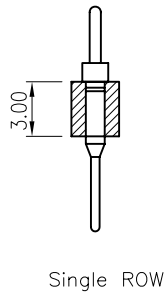
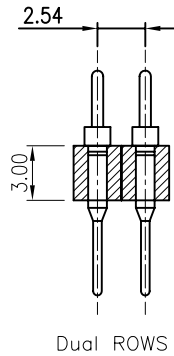
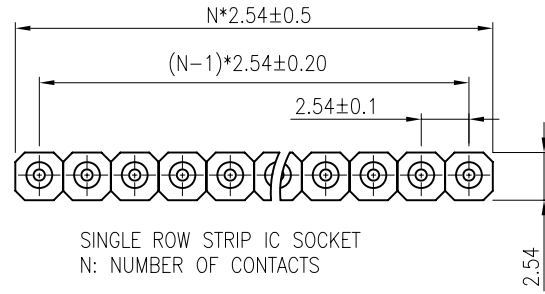


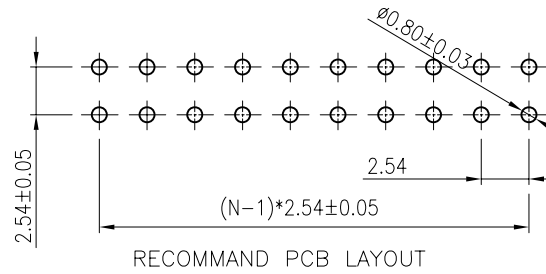
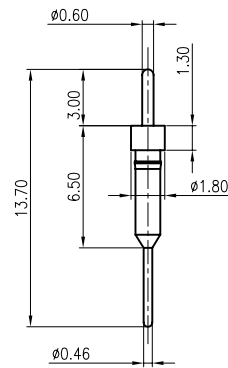
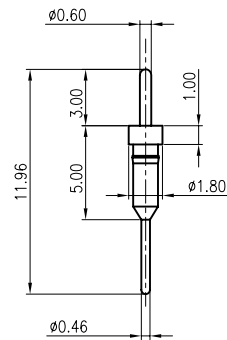
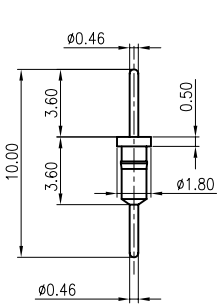
REV.	DESCRIPTION	DRAWN	CHECKED	APPROVED
A	NEW RELEASE	LJH 03/30/06'		



NOTES:

- ELECTRICAL CHARACTERISTICS:
  - CONTACT RESISTANCE: 20mΩ Max. INITIAL.
  - DIELECTRIC WITHSTANDING VOLTAGE: 500V AC(rms) FOR 1 MINUTE.
  - INSULATION RESISTANCE: 1000MΩ Min.
- ENVIRONMENT CHARACTERISTICS:
  - OPERATING TEMPERATURE: 0°C~+85°C.
  - STORAGE TEMPERATURE: -20°C~+70°C.
- PART NUMBER: DS1004
- PRODUCT NUMBER CODE:

DS1004 - X X X  
 CONTACT TYPE  
 1: TYPE 1  
 2: TYPE 2  
 3: TYPE 3  
 CONTACT PLATING  
 F1: Full GOLD FLASH  
 No. OF CONTACTS  
 1\*1 - 1\*40  
 2\*1 - 2\*40  
 SERIES No.  
 DS1004



TYPE1/2/3 DIA.(TOLERANCE=±0.05)

GENERAL TOLERANCE		ANGLE TOLERANCE	
X.	±0.60	X.	±5'
.X	±0.38	.X	±3'
.XX	±0.25	.XX	±2'

PROJECTION	TITLE
UNITS	DIP STRIP ADAPTER PITCH 2.54mm
SHEET SIZE	SERIES DS1004 SERIES
PSLM-1 40 1004	

2	CONTACT		COPPER ALLOY	GOLD FLASH	DRAWING TYPE	CUSTOMER	
1	HOUSING		THERMOPLASTIC	UL 94 V-0	SCALE	1:1	SHEET 10F1
ITEM	PART NAME	PART NO.	MATERILAS	FINISHED	DRAWING NO.	C-DS1004-XXX	