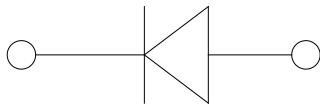
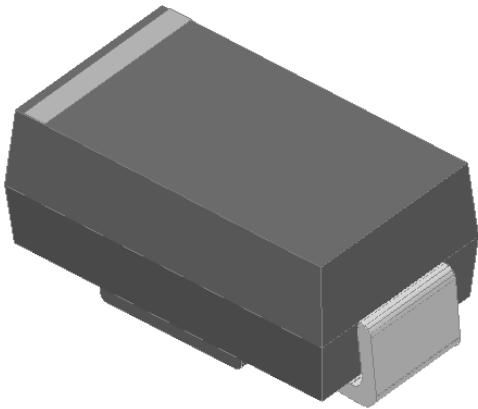


## Surface Mount High Efficient Rectifier



### Features

- Low profile package
- Ideal for automated placement
- Glass passivated chip junction
- High forward surge capability
- Super fast reverse recovery time
- Meets MSL level 1, per J-STD-020, LF maximum peak of 260 °C

### Typical Applications

For use in high frequency rectification of power supplies, inverters, converters, and freewheeling diodes for consumer, automotive, and telecommunication.

### Mechanical Data

- **Package:** DO-214AC (SMA)  
Molding compound meets UL 94 V-0 flammability rating, RoHS-compliant, halogen-free
- **Terminals:** Tin plated leads, solderable per J-STD-002 and JESD22-B102
- **Polarity:** Cathode line denotes the cathode end

### ■ Maximum Ratings (T<sub>a</sub>=25°C Unless otherwise specified)

PARAMETER	SYMBOL	UNIT	HS1A	HS1B	HS1D	HS1F	HS1G	HS1J	HS1K	HS1M
Device marking code			HS1A	HS1B	HS1D	HS1F	HS1G	HS1J	HS1K	HS1M
Repetitive peak reverse voltage	VRRM	V	50	100	200	300	400	600	800	1000
Average rectified output current @ 60Hz sine wave, Resistance load, T <sub>a</sub> (FIG.1)	I <sub>O</sub>	A	1.0							
Surge (non-repetitive) forward current @ 60Hz Half-sine wave, 1 cycle, T <sub>a</sub> =25°C	I <sub>FSM</sub>	A	30							
Storage temperature	T <sub>stg</sub>	°C	-55~+150							
Junction temperature	T <sub>j</sub>	°C	-55 ~ +150							

### ■ Electrical Characteristics (T<sub>a</sub>=25°C Unless otherwise specified)

PARAMETER	SYMBOL	UNIT	TEST CONDITIONS	HS1A	HS1B	HS1D	HS1F	HS1G	HS1J	HS1K	HS1M
Maximum instantaneous forward voltage drop per diode	V <sub>F</sub>	V	I <sub>FM</sub> =1.0A	1.0			1.3		1.7		
Maximum reverse recovery time	t <sub>r</sub>	ns	I <sub>F</sub> =0.5A, I <sub>R</sub> =1.0A, I <sub>r</sub> =0.25A	50						75	
Maximum DC reverse current at rated DC blocking voltage per diode @ V <sub>RM</sub> =VRRM	IRRM	μA	T <sub>a</sub> =25°C	5							
			T <sub>a</sub> =100°C	100							



# HS1A THRU HS1M

## ■ Thermal Characteristics (T<sub>a</sub>=25°C Unless otherwise specified)

PARAMETER	SYMBOL	UNIT	HS1A	HS1B	HS1D	HS1F	HS1G	HS1J	HS1K	HS1M
Thermal Resistance	R <sub>θJ-A</sub> (1)	°C/W	75 <sup>1)</sup>							
	R <sub>θJ-L</sub> (1)	°C/W	27 <sup>1)</sup>							

Note

(1) Thermal resistance from junction to ambient and from junction to lead mounted on P.C.B. with 0.2" x 0.2" (5.0 mm x 5.0 mm) copper pad areas

## ■ Ordering Information (Example)

PREFERRED P/N	PACKAGE CODE	UNIT WEIGHT(g)	MINIMUM PACKAGE(pcs)	INNER BOX QUANTITY(pcs)	OUTER CARTON QUANTITY(pcs)	DELIVERY MODE
HS1A-HS1M	F2	Approximate 0.059	2000	8000	64000	7" reel
HS1A-HS1M	F1	Approximate 0.059	5000	10000	80000	13" reel

## ■ Characteristics (Typical)

FIG1: I<sub>o</sub>-T<sub>L</sub>Curve

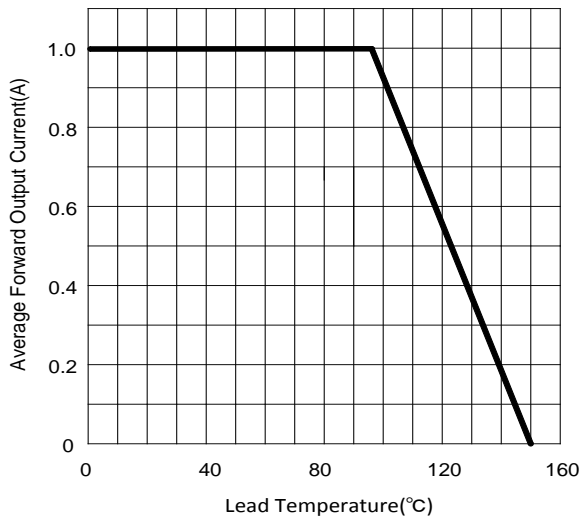


FIG2: Surge Forward Current Capability

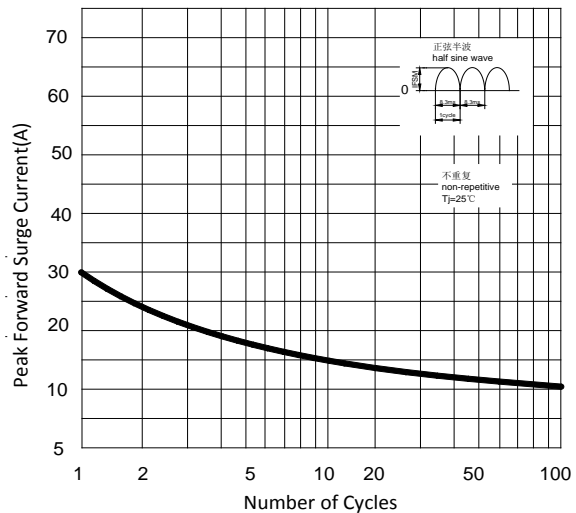


FIG3: TYPICAL FORWARD CHARACTERISTICS

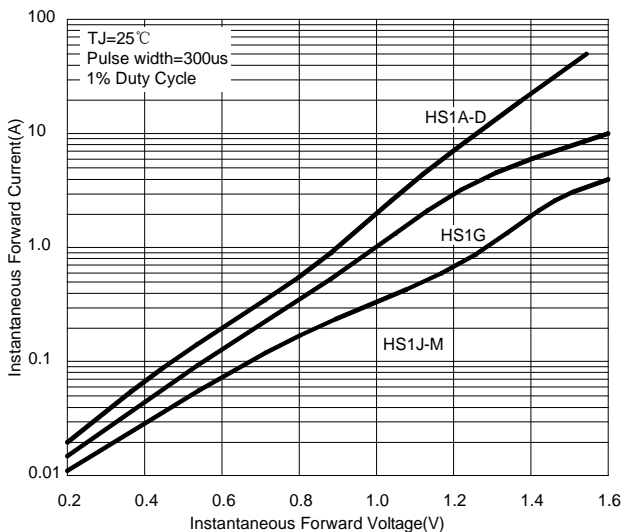
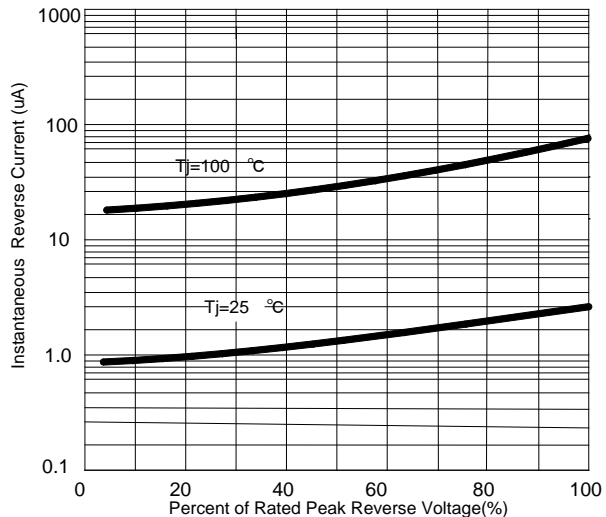


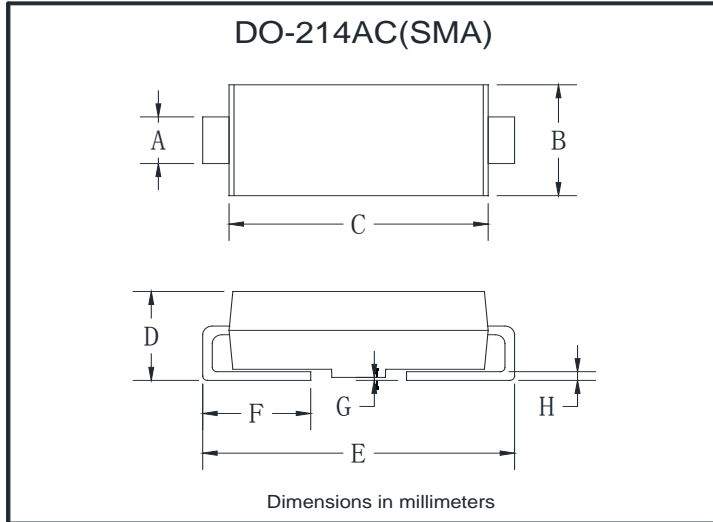
FIG4: Typical Reverse Characteristics





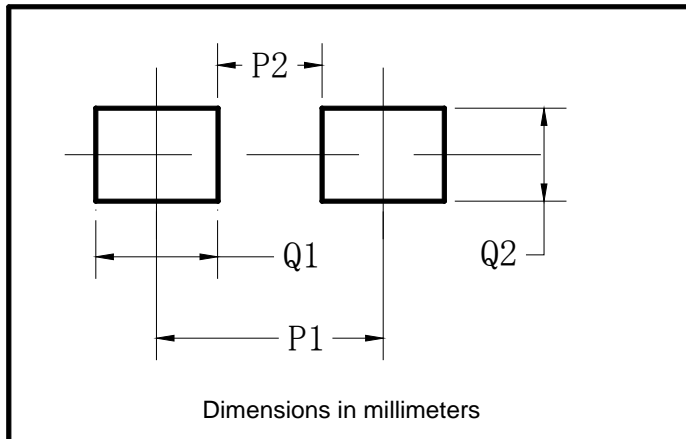
# HS1A THRU HS1M

## ■ Outline Dimensions



DO-214AC(SMA)		
Dim	Min	Max
A	1.25	1.58
B	2.40	2.83
C	4.25	4.75
D	1.90	2.30
E	4.93	5.28
F	0.76	1.41
G	0.08	0.20
H	0.15	0.31

## ■ Suggested Pad Layout



Dim	Milimeters
P1	4.00
P2	1.50
Q1	2.50
Q2	1.70



## HS1A THRU HS1M

---

### Disclaimer

The information presented in this document is for reference only. Yangzhou Yangjie Electronic Technology Co., Ltd. reserves the right to make changes without notice for the specification of the products displayed herein to improve reliability, function or design or otherwise.

The product listed herein is designed to be used with ordinary electronic equipment or devices, and not designed to be used with equipment or devices which require high level of reliability and the malfunction of which would directly endanger human life (such as medical instruments, transportation equipment, aerospace machinery, nuclear-reactor controllers, fuel controllers and other safety devices), Yangjie or anyone on its behalf, assumes no responsibility or liability for any damages resulting from such improper use of sale.

This publication supersedes & replaces all information previously supplied. For additional information, please visit our website [http:// www.21yangjie.com](http://www.21yangjie.com) , or consult your nearest Yangjie's sales office for further assistance.