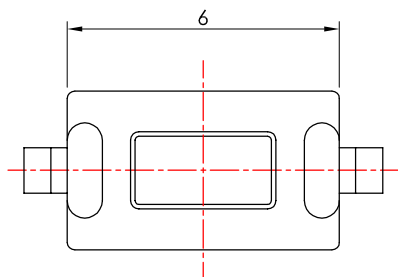
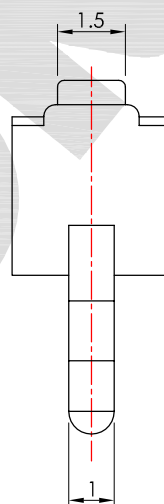
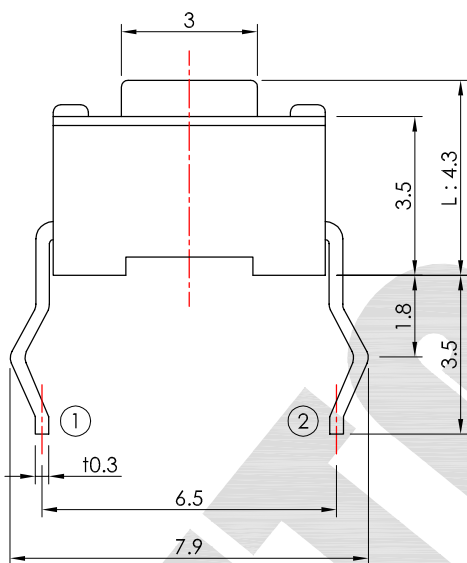


本圖面若與目錄之規格尺寸不符，以本圖面規格尺寸為主。  
Below is our main specification if different from catalog.

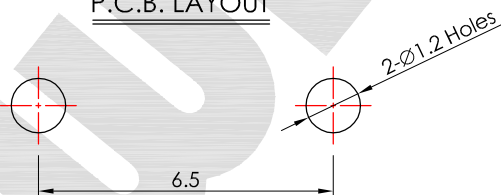
RoHS compliant



CIRCUIT DIAGRAM



P.C.B. LAYOUT



RoHS compliant

03XXHIM-XXXG-G

MODEL NO.	L
43	4.3
50	5.0

OPERATING FORCE
130, 180, 250

**SPECIFICATION**

**Rating:** 50mA 12V DC Max.

**Circuit:** SPST.

**Function:** OFF-(ON).

**Travel:** 0.25±0.1mm.

**Contact resistance:** 100mΩ Max.(initial).

**Operating force:** 180±50g.

**Life:** 50,000 Cycles Min.

**Minimum load:** 10mA 3.3V DC.(reference only)

**Soldering temperature:** 250°C Max. for 3 sec.

**Soldering time:** 1 time only.

**Note:** Unwashable, don't be immersed by epoxy and organic solvent.



CV3.1	△		
CV3.0	無	新繪製	2010.11.02
版本 VER.	符號 SYMBOL	修改內容 ALTERATION	更新日期 DATE

產品 PRODUCT		Tact Switch		型號 MODEL NO.	0343HIM-180G-G
比例 SCALE	6 : 1	單位 UNIT	mm	<div style="display: flex; justify-content: space-between; align-items: center;"> <div style="text-align: center;"> </div> <div style="text-align: center;"> </div> </div> <p><b>一綺電子企業股份有限公司</b>                      總公司：110 台北市信義路四段415號13樓之3                      13F-3 NO. 415, SEC. 4, HSIN YI ROAD, TAIPEI, TAIWAN                      TEL : 886-2-27290229 (Rep.) FAX : 886-2-27582086                      URL : http://www.switronic.com.tw                      E-MAIL : switches@ms36.hinet.net</p>	
公差 TOLERANCE	±0.3mm				
製圖 DRAWN BY	核圖 CHECKED BY	主管 APPROVED BY			
Jack Liao	Nail Chen	Margaret Lee			