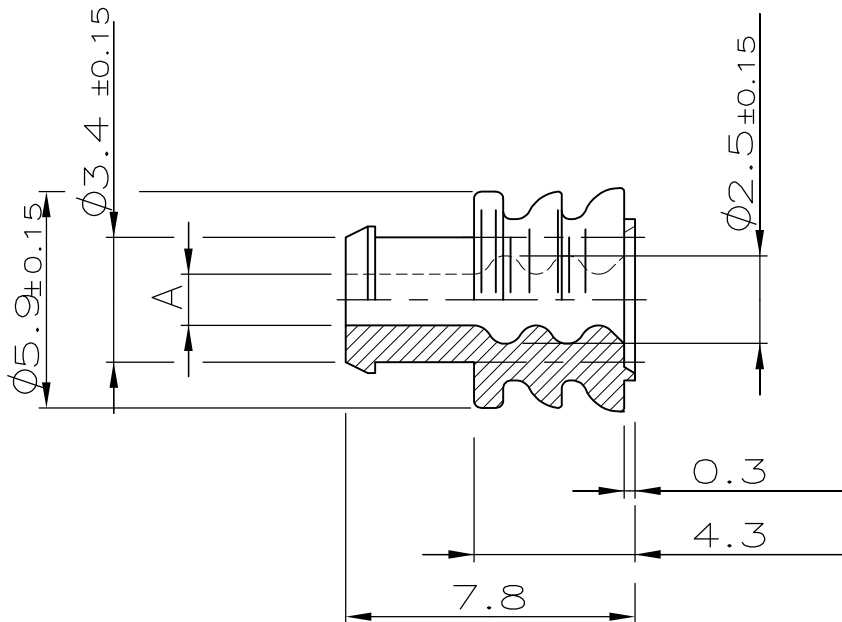
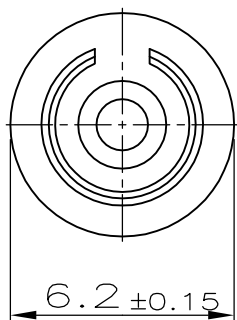


MATED WITH: -	LOC A	DIST -	REVISIONS					
			P	LTR	DESCRIPTION	DATE	DWN	APVD
PROJECT NR.: 87-9187			K11	REVISED PER ECR-12-002298		06FEB2012	Mah	Abele

828921-3	1.9 ± 0.15	OBSOLETE
828921-2	1.5 ± 0.15	OBSOLETE
828921-1	1.5 ± 0.15	
PN	Maß A	



Bemerkungen
NOTES

- Einzelheiten der Ausfuehrung bleiben dem Hersteller ueberlassen
DETAILS OF DESIGN ARE LEFT TO MANUFACTURER
- Passend fuer Drahtgroessenbereich > 1 - 2.5mm²
SUITABLE FOR WIRE SIZE RANGE:
- Passend fuer Isolationsdurchmesser:
SUITABLE FOR INSULATION DIAMETER: 2.1 - 3.0
- Bestueckungshilfe fuer Einzelleiterabdichtung siehe: TE CONNECTIVITY: 965702
INSERTER FOR SINGLE WIRE SEAL SEE :
- Keine Luftloecher zulaessig
NO AIR BUBBLES PERMITTED

1 : 1



nur für Handzangen-
verarbeitung / oelfrei
FOR HAND TOOL PROCESS ONLY
OILFREE

(K8)

THIS DRAWING IS UNPUBLISHED. ALL RIGHTS RESERVED. © COPYRIGHT - By -

DIMENSIONS: mm	DWN	P. Gaupp	17 APR 97	MATERIAL	-	FINISH	-																		
	CHK	D. Kümpel	21 APR 97	TE TE Connectivity																					
TOLERANCES UNLESS OTHERWISE SPECIFIED:			APVD					-																	
<table border="0"> <tr><td>PLC</td><td>±</td><td>-</td></tr> <tr><td>1 PLC</td><td>±</td><td>-</td></tr> <tr><td>2 PLC</td><td>±</td><td>-</td></tr> <tr><td>3 PLC</td><td>±</td><td>-</td></tr> <tr><td>4 PLC</td><td>±</td><td>-</td></tr> <tr><td>ANGLES</td><td>±</td><td>-</td></tr> </table>	PLC	±	-	1 PLC	±	-	2 PLC	±	-	3 PLC	±	-	4 PLC	±	-	ANGLES	±	-	PRODUCT SPEC	108-18263-1		NAME			2.5mm System, Einzeldichtung 2.5MM SYSTEM, SINGLE WIRE SEAL
PLC	±	-																							
1 PLC	±	-																							
2 PLC	±	-																							
3 PLC	±	-																							
4 PLC	±	-																							
ANGLES	±	-																							
	APPLICATION SPEC	114-18031		SIZE	A4	CAGE CODE	00779																		
	WEIGHT	-		DRAWING NO	C-828921		RESTRICTED TO	-																	
CUSTOMER DRAWING				SCALE	5:1	SHEET	1 OF 1	REV	K11																

Mouser Electronics

Authorized Distributor

Click to View Pricing, Inventory, Delivery & Lifecycle Information:

[TE Connectivity:](#)

[828921-1](#)