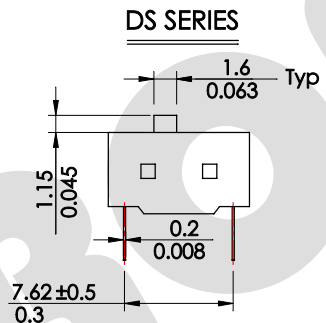
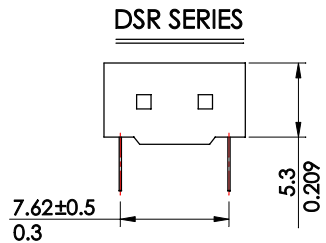
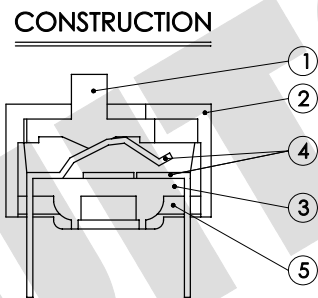
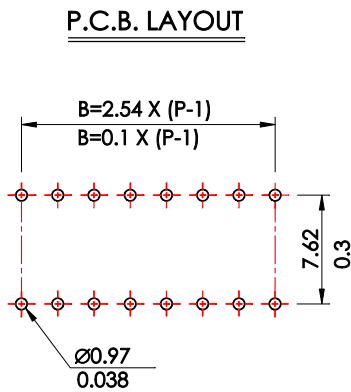
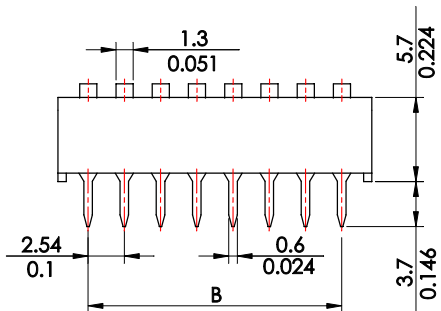
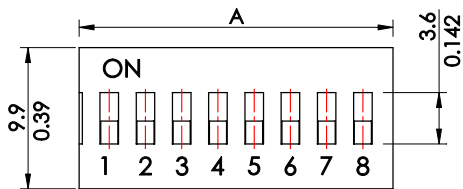
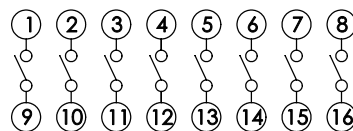


本圖面若與目錄之規格尺寸不符，以本圖面規格尺寸為主。  
Below is our main specification if different from catalog.

RoHS compliant



CIRCUIT DIAGRAM



Prod No.	No. of POS	DIM.A	DIM.B
DS/DSR 01	01	3.84 (0.151)	—
DS/DSR 02	02	6.08 (0.239)	2.54 (0.100)
DS/DSR 03	03	8.92 (0.351)	5.08 (0.200)
DS/DSR 04	04	11.16 (0.439)	7.62 (0.300)
DS/DSR 05	05	13.70 (0.539)	10.16 (0.400)
DS/DSR 06	06	16.24 (0.639)	12.70 (0.500)
DS/DSR 07	07	19.08 (0.751)	15.24 (0.600)
DS/DSR 08	08	21.32 (0.839)	17.78 (0.700)
DS/DSR 09	09	24.16 (0.951)	20.32 (0.800)
DS/DSR 10	10	26.40 (1.039)	22.86 (0.900)
DS/DSR 12	12	31.48 (1.239)	27.94 (1.100)

ACTUATOR	
<input type="checkbox"/>	Raised type
R	Recessed type

POSITION
01 ~ 12

COVER COLOR	
R	Red
BU	Blue
K	Black

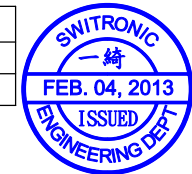
△ DSX-XXBXXX-G

Tooling number

RoHS compliant

MARKING	
<input type="checkbox"/>	Marking
N	No marking

SEAL	
<input type="checkbox"/>	Regular
T	Top tape sealed



SPECIFICATION

Switching rating: 25mA 24V DC.  
 Non-switching rating: 100mA 50V DC.  
 Contact resistance: 50mΩ Max.(initial)  
 Insulation resistance: 100MΩ Min. at 500V DC.  
 Withstand voltage: 500V AC for 1 minute.  
 Stroke: 2mm.  
 Operating force: 800g Max. △  
 Minimum load: 10mA 3.3V DC.(reference only)  
 Electrical life: 2,000 Cycles.  
 Soldering temperature: 250°C Max. for 3 sec.  
 Soldering time: 1 time only.  
 Note: Unwashable, don't be immersed by epoxy and organic solvent.

MATERIAL

Actuator: UL-94V-0 PBT, thermoplastic, white. ———— ①  
 Cover: UL-94V-0 PBT, thermoplastic, blue. ———— ②  
 Base: UL-94V-0 PBT, thermoplastic, black. ———— ③  
 Terminal: Phosphor bronze, Gold plated. ———— ④  
 Potting: Epoxy, black. ———— ⑤

產品 PRODUCT	Dip Switch		型號 MODEL NO.	DS-08BBU-G
製圖 DRAWN BY	核圖 CHECKED BY	主管 APPROVED BY	單位 UNIT	mm
Jay Kang	Alex Lin	Margaret Lee	比例 SCALE	2 : 1
			公差 TOLERANCE	.X=±0.3mm, .XX=±0.2mm

**SWITRONIC**  
INDUSTRIAL CORP.  
**Switches**



一綺電子企業股份有限公司

總公司：110 台北市信義路四段415號13樓之3  
 13F-3 NO. 415, SEC. 4, HSIN YI ROAD, TAIPEI, TAIWAN  
 TEL : 886-2-27290229 (Rep.) FAX : 886-2-27582086  
 URL : http://www.switronic.com.tw  
 E-MAIL : switches@ms36.hinet.net