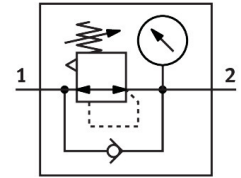


# Pressure regulator LR-1-D-MAXI-MPA

Part number: 8002277

**FESTO**



 General operating condition

## Data sheet

Feature	Value
Size	Maxi
Series	D
Actuator lock	Rotary knob with detent
Mounting position	optional
Design	Piloted piston regulator
Controller function	Output pressure constant With secondary venting
Symbol	00991558
Pressure gauge (ANALOG) or Pressure display (DIGITAL)	With pressure gauge
Operating pressure	0 MPa ... 1.6 MPa
Operating pressure	0 bar ... 16 bar
Pressure regulation range	0.5 bar ... 12 bar
Max. pressure hysteresis	0.04 MPa
Max. pressure hysteresis	0.4 bar
Max. pressure hysteresis	5.8 psi
Standard nominal flow rate (standardised to DIN 1343)	11500 l/min
Operating medium	Compressed air to ISO 8573-1:2010 [7:4:4] Inert gases
Note on operating and pilot medium	Lubricated operation possible (in which case lubricated operation will always be required)
LABS (PWIS) conformity	VDMA24364-B1/B2-L
Air purity class at output	Compressed air to ISO 8573-1:2010 [7:4:4] Inert gases
Media temperature	-10 °C ... 60 °C
Ambient temperature	-10 °C ... 60 °C
Product weight	800 g
Type of mounting	Front panel mounting In-line installation With accessories
Pneumatic connection, port 1	G1
Pneumatic connection, port 2	G1
Note on materials	RoHS-compliant
Material sub-base	Die-cast zinc
Material seals	NBR
Material housing	Die-cast zinc