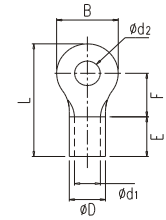


# Non Insulated Ring Terminals

Electrolytic Copper  
Soldered Barrel  
Tin Plated



Part No	ød <sub>2</sub>	B	L	F	E	ød <sub>1</sub>	øD	Wire Size AWG(mm <sup>2</sup> )	Current Rating	Qty/Box	Weight/Box
KTL-003-01	3.2	5.5	11.5	4.3						7000	2.8 kg
KTL-003-02	4.3	8.0	15.0	6.6	4.5	1.3	2.8	22-20 (0.25-1.0)	10 A	6000	3.5 kg
KTL-003-03	5.3	8.0	15.0	6.6						6000	3.1 kg
KTL-003-04	3.2	5.5	11.5	4.3						7000	2.9 kg
KTL-003-05	3.7	5.5	11.5	4.3						9000	3.3 kg
KTL-003-06	3.7	6.6	14.4	6.6						6000	3.6 kg
KTL-003-07	3.2	6.6	14.4	6.6						6000	3.2 kg
KTL-003-08	4.3	8.0	15.8	7.3	4.5	1.7	3.4	22-16 (0.25-1.65)	19 A	6000	3.5 kg
KTL-003-94	4.3	6.6	14.4	6.6						6000	2.9 kg
KTL-003-95	5.3	8.0	15.8	7.3						6000	3.3 kg
KTL-003-09	6.4	11.6	21.7	11.4						4000	3.8 kg
KTL-003-10	8.4	11.6	21.7	11.4						4000	3.1 kg
KTL-003-11	3.2	8.5	16.8	7.75						5000	3.8 kg
KTL-003-12	3.7	6.6	14.4	6.3						7000	3.9 kg
KTL-003-13	4.3	8.5	16.8	7.75						4000	3.2 kg
KTL-003-14	4.3	6.6	14.4	6.3	4.8	2.3	4.0	16-14 (1.04-2.63)	27 A	5000	2.8 kg
KTL-003-15	5.3	9.5	16.8	7.25						4000	3.2 kg
KTL-003-16	6.4	12.0	21.8	11.0						3000	2.4 kg
KTL-003-17	8.4	12.0	21.8	11.0						3000	2.9 kg
KTL-003-18	10.5	13.6	25.5	13.9						3000	2.9 kg
KTL-003-19	4.3	9.5	20.0	8.2	6.8	3.2	5.0	12-10 (2.63-4.6)	37 A	3000	3.6 kg
KTL-003-20	5.3	9.5	20.0	8.2						3000	3.5 kg
KTL-003-21	6.4	12.0	21.4	8.5						3000	4.1 kg
KTL-003-22	3.7	9.5	19.8	8.25						3000	5.0 kg
KTL-003-23	4.3	9.5	19.8	8.25						3000	4.7 kg
KTL-003-24	5.3	9.5	19.8	8.25	6.8	3.5	5.6	8 (2.63-6.64)	48 A	3000	4.4 kg
KTL-003-25	6.4	12.0	25.8	13.0						2000	4.1 kg
KTL-003-26	8.4	15.0	28.0	13.7						2000	4.0 kg
KTL-003-27	10.5	15.0	28.0	13.7						2000	3.9 kg
KTL-003-28	5.3	12.0	23.8	9.3						2000	4.3 kg
KTL-003-29	6.4	12.0	23.8	9.3						2000	3.9 kg
KTL-003-30	8.4	15.0	29.8	13.8	8.5	4.5	6.9	8 (6.64-10.52)	62 A	1000	4.6 kg
KTL-003-31	10.5	15.0	29.8	13.8						1000	3.8 kg
KTL-003-32	13.0	20.0	33.5	15.0						600	4.4 kg
KTL-003-33	5.3	12.0	27.5	11.5						1000	5.0 kg
KTL-003-34	6.4	12.0	27.5	11.5						1000	4.9 kg
KTL-003-35	8.4	16.0	32.5	14.5	10.0	5.8	8.8	6 (10.52-16.78)	88 A	700	4.2 kg
KTL-003-36	10.5	16.0	32.5	14.5						600	3.3 kg
KTL-003-37	13.0	22.0	40.8	19.8						600	4.7 kg
KTL-003-39	6.4	16.5	33.7	13.45						600	6.1 kg
KTL-003-40	8.4	16.5	33.7	13.45	12.0	7.7	11.3	4 (16.78-26.66)	115 A	400	3.4 kg
KTL-003-41	10.5	16.5	36.7	15.95						400	3.9 kg
KTL-003-42	13.0	22.0	42.5	19.5						400	4.1 kg
KTL-003-43	6.4	22.0	41.0	16.0						300	5.1 kg
KTL-003-44	8.4	22.0	41.0	16.0	14.0	9.4	13.4	2 (26.66-42.42)	160 A	300	4.9 kg
KTL-003-45	10.5	22.0	43.0	18.0						300	5.0 kg
KTL-003-46	13.0	22.0	43.0	18.0						300	4.7 kg
KTL-003-47	8.4	22.0	47.0	18.0						200	4.4 kg
KTL-003-48	10.5	22.0	47.0	18.0						200	4.3 kg
KTL-003-49	13.0	22.0	49.0	20.0	18.0	11.4	15.4	0 (42.42-60.57)	215 A	200	4.1 kg
KTL-003-50	17.0	32.0	54.0	20.0						200	4.3 kg
KTL-003-51	19.0	32.0	54.0	20.0						200	4.6 kg
KTL-003-52	8.4	27.0	50.5	18.0						200	4.2 kg
KTL-003-53	10.5	27.0	50.5	18.0	19.0	13.5	17.5	2/0 (60.57-76.28)	235 A	200	4.1 kg
KTL-003-54	13.0	27.0	52.5	20.0						200	4.1 kg
KTL-003-55	17.0	32.0	55.0	20.0						200	4.1 kg
KTL-003-56	19.0	32.0	55.0	20.0						200	5.1 kg

Unit = mm

Part No	∅d <sub>2</sub>	B	L	F	E	∅d <sub>1</sub>	∅D	Wire Size AWG(mm <sup>2</sup> )	Current Rating	Qty/Box	Weight/Box
KTL-003-57	8.4	27.0	52.5	19.0						100	3.9 kg
KTL-003-58	10.5	27.0	52.5	19.0						100	3.8 kg
KTL-003-59	13.0	27.0	52.5	19.0	20.0	14.5	19.5	3/0 (76.28-96.3)	255 A	100	3.7 kg
KTL-003-60	17.0	32.0	58.0	22.0						100	4.6 kg
KTL-003-61	19.0	32.0	58.0	22.0						100	4.3 kg
KTL-003-62	21.0	32.0	58.0	22.0						100	4.1 kg
KTL-003-63	10.5	28.5	55.25	20.0						80	4.2 kg
KTL-003-64	13.0	28.5	55.25	20.0						80	4.2 kg
KTL-003-65	17.0	32.0	69.0	32.0	21.0	16.4	22.4	4/0 (96.3-113.04)	300 A	80	5.1 kg
KTL-003-66	19.0	32.0	69.0	32.0						80	4.9 kg
KTL-003-67	21.0	32.0	69.0	32.0						80	4.6 kg
KTL-003-68	23.0	32.0	69.0	32.0						80	4.4 kg
KTL-003-69	10.5	32.0	62.0	22.0						60	4.0 kg
KTL-003-70	13.0	32.0	62.0	22.0						60	3.9 kg
KTL-003-71	17.0	32.0	72.0	32.0	24.0	18.0	24.0	4/0 (113.04-117.2)	350 A	60	5.4 kg
KTL-003-72	19.0	32.0	72.0	32.0						60	6.1 kg
KTL-003-73	21.0	32.0	72.0	32.0						60	5.9 kg
KTL-003-74	23.0	32.0	72.0	32.0						60	4.0 kg
KTL-003-75	10.5	36.0	68.0	23.0						40	3.9 kg
KTL-003-76	13.0	36.0	68.0	23.0						40	3.8 kg
KTL-003-77	17.0	36.0	68.0	23.0	27.0	19.5	26.5	25-300MCM (117.2-152.05)	395 A	40	3.6 kg
KTL-003-78	19.0	36.0	81.0	36.0						40	4.9 kg
KTL-003-79	21.0	36.0	81.0	36.0						40	4.7 kg
KTL-003-80	25.0	36.0	81.0	36.0						40	4.6 kg
KTL-003-81	10.5	40.0	73.0	24.5						40	5.1 kg
KTL-003-82	13.0	40.0	73.0	24.5	28.5	21.0	28.6	300-350MCM (152.05-192.6)	400 A	40	5.1 kg
KTL-003-83	17.0	40.0	73.0	24.5						40	4.9 kg
KTL-003-84	21.0	40.0	87.5	39.0						40	5.3 kg
KTL-003-85	13.0	44.0	78.0	24.5						40	4.9 kg
KTL-003-86	17.0	44.0	78.0	24.5						40	5.3 kg
KTL-003-87	21.0	44.0	91.0	37.5	31.5	24.0	32.5	400MCM (192.6-242.27)	470 A	40	5.1 kg
KTL-003-88	23.0	44.0	91.0	37.5						40	4.9 kg
KTL-003-89	25.0	44.0	91.0	37.5						40	4.7 kg
KTL-003-90	13.0	50.5	94.25	33.5						20	5.2 kg
KTL-003-91	17.0	50.5	94.25	33.5						20	4.9 kg
KTL-003-92	21.0	50.5	104.75	45.0	35.5	28.0	37.6	500-600MCM (242.27-325.0)	650 A	20	6.1 kg
KTL-003-93	25.0	50.5	104.75	45.0						20	5.6 kg

Unit = mm