

Series 327

SPECIFICATIONS

技術資料

Header Terminal Blocks for PC-Boards (327系列)

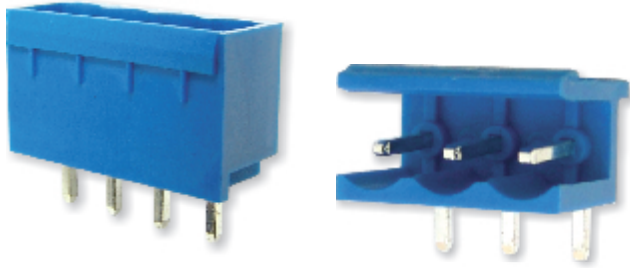
印刷線路板用插針

Mates with Series 323, 325, 326

Spacing 5.0mm, 10.0mm, 7.62mm, 5.08mm, 10.16mm

與323, 325, 326系列配合使用

間距5.0mm, 10.0mm, 7.62mm, 5.08mm, 10.16mm



327-041-52-A0
(Closed End Straight Pin)

327-041-22-A0
(Opened End Right Angle Pin)



MATERIAL 材料

- **Contact 觸點(metal housing 金屬殼體):**
Brass, Tin plated / 黃銅 · 銅錫電鍍
- **Surface of Solder Tail 針腳電鍍:**
Tin plated / 鍍錫
- **Insulator Body 絕緣體(housing 殼體)**
Polyamide PA66 (UL 94 V-0) / 尼龍PA66 (UL 94 V-0)

ELECTRICAL 電機方面

- **Current Rating 工作電流:** 13 Amp
- **Dielectric Strength 電介質:** 2500V
- **Rated Voltage 額定電壓:** 300V
- **Resistance to Tracking 絕緣阻值:** 5MΩ
- **Insulation Withstands Voltage 耐電壓:** AC1500V/Min

MECHANICAL 機械方面

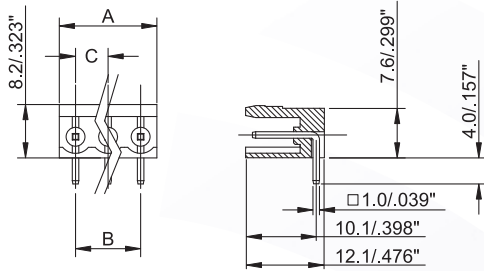
- **Operating Temperature 工作溫度:** -40°C to +105°C
- **Short Time Peak Temperature 短暫能容溫度:** +200°C max

Recommended PC-Board-Holes

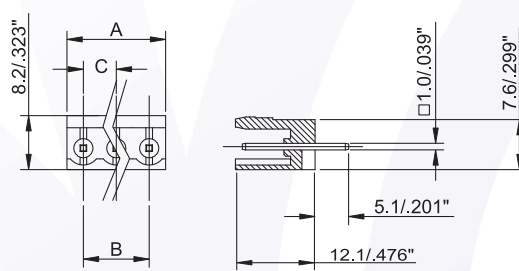
diameter:Ø1.2mm to Ø1.4mm n = number of contacts

PITCH	Dimension A	Dimension B	Dimension C	Dimension D
5mm	n x 5	(n - 1) x 5	5	n x 5 + 1.2
10mm	n x 10	(n - 1) x 10	10	n x 10 + 1.2
7.62mm	n x 7.62	(n - 1) x 7.62	7.62	n x 7.62 + 1.2
5.08mm	n x 5.08	(n - 1) x 5.08	5.08	n x 5.08 + 1.2
10.16mm	n x 10.16	(n - 1) x 10.16	10.16	n x 10.16 + 1.2

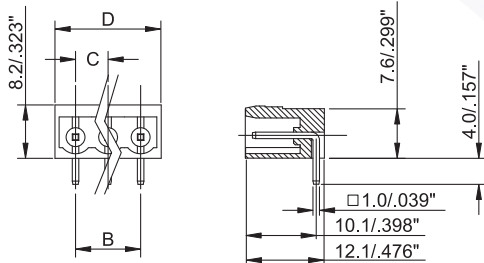
OPENED END RIGHT ANGLE PIN



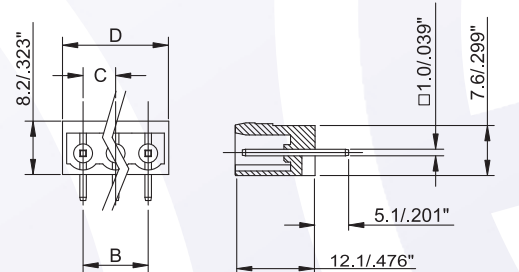
OPENED END STRAIGHT PIN



CLOSED END RIGHT ANGLE PIN



CLOSED END STRAIGHT PIN



HOW TO ORDER 排序整理

3 2 7 - X X X - X X - A 0

Series No.	No. of Pole	Pitch 間距		Color 顏色
1	5.0mm	1	Opened End Straight Pin 開口,直針	1 Grey 灰
2	10.0mm	2	Opened End Right Angle Pin 開口,曲針	2 Blue 藍
7	7.62mm	5	Closed End Straight Pin 封口,直針	3 Black 黑
8	5.08mm	6	Closed End Right Angle Pin 封口,曲針	4 Green 綠
9	10.16mm			