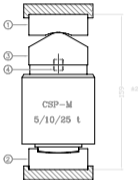


DATE	LET.	REVISION	BY	CHK	APPR.
28-04-'95	A	See RTE-068	U.D.		
02-12-'97	B	See RTE-108	U.D.		
18-02-'03	C	RTE ECR-185	HSE		



899953-11

PARTNUMBER

499033-00	4.	Threaded rod M12x1,75	RVS 304
499013-00	3.	Ball Top	See material
499012-00	2.	Lower Disk	See material
499011-00	1.	Upper Disk	See material
PARTNUMBER	ITEM.	DESCRIPTION	SPECIFICATION

REVERE TRANSDUCERS EUROPE

THIS DRAWING SHALL NOT BE REPRODUCED WITHOUT PERMISSION OF REVERE TRANSDUCERS EUROPE

GEOMTOL ±0.2

ANGLE ±

MATERIAL:

SCALE 1:1

ROUGH 2/2

FINISH:

PROJ. -88-EE-

DRAWN : U.Drelacharf

DATE : 11-03-'94

DRAWING : **Ass Mounting Set**
CSP-M 5, 10 & 25 ton

899953-11 B

SIZE

SHEET: OF

A4