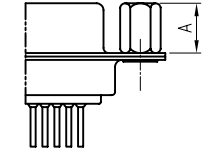
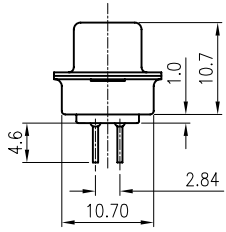
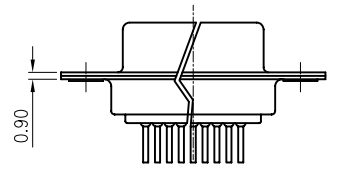
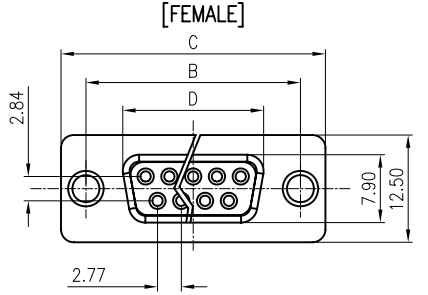
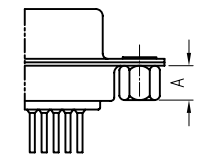


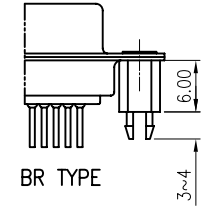
REV.	DESCRIPTION	DRAWN	CHECKED	APPROVED



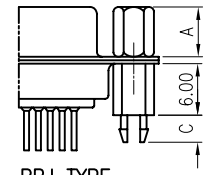
CC TYPE



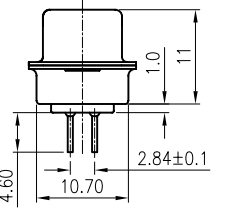
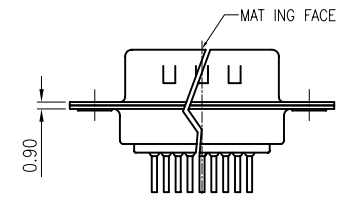
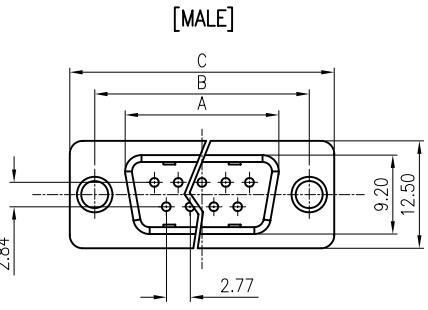
CS TYPE



BR TYPE



BRJ TYPE



Dimension

Position	A±0.2	B±0.2	C±0.3	D
9	17.90	24.99	30.80	16.33
15	26.50	33.32	39.14	24.66
25	40.00	47.04	53.04	38.38
37	56.50	63.50	69.32	54.84

NOTES:

- ELECTRICAL CHARACTERISTICS:
 - CONTACT RESISTANCE: 20mΩ Max. INITIAL.
 - DIELECTRIC WITHSTANDING VOLTAGE: 500V AC(rms) FOR 1 MINUTE.
 - INSULATION RESISTANCE: 1000MΩ Min.
- ENVIRONMENT CHARACTERISTICS:
 - OPERATING TEMPERATURE: 0°C~+85°C.
 - STORAGE TEMPERATURE: -20°C~+70°C.
- PART NUMBER: DS1034
- PRODUCT NUMBER CODE:

DS1034- X X X X X X X

- SCREW DIM. A
- S: Standard(W/O nut)
- 1: 5.00
- 2: 3.00
- 3: 5.20
- 4: 4.80
- 5: 5.80
- 6: 3.80
- SCREW TYPE
- S: Standard(W/O nut)
- 1: CC TYPE
- 2: CS TYPE
- 3: BR TYPE
- 4: BRJ TYPE DIM. B:6.00 C: 3~4mm
- 5: BRJ TYPE DIM. B:6.00 C: 5~6mm
- CONTACT PLATING
- Si: FULL GOLD FLASH
- 0: SELECTIVE GOLD FLASH
- SHELL PLATING
- T: FORNT & BACK SHELL TIN
- N: FORNT SHELL NICKEL, BACK SHELL TIN
- HOUSING COLOR
- B: BLACK
- W: WHITE
- U: BLUE
- CONNECTOR TYPE
- M: MALE
- F: FEMALE
- No.OF CONTACTS
- 09: 9pos.
- 15: 15pos.
- 25: 25pos.
- 37: 37pos.

GENERAL TOLERANCE		ANGLE TOLERANCE		PROJECTION		TITLE	D-SUB DIP STRAIGHT TYPE	
X.	±0.60	X.	±5°	UNITS	mm	SERIES	DS1034 SERIES	
.X	±0.38	.X	±3°	DPS-15F / DBB-15F		DPS-37F / DBB-37F		
.XX	±0.25	.XX	±2°	DPS-15M / DBB-15M		DPS-37M / DBB-37M		
DRAWING TYPE		CUSTOMER		DPS-25F / DBB-25F		DPS-9F / DBB-9F		
SCALE		1:1	SHEET	DPS-25M / DBB-25M		DPS-9M / DBB-9M		
DRAWING NO.		C-DS1034-XXXXXX						