

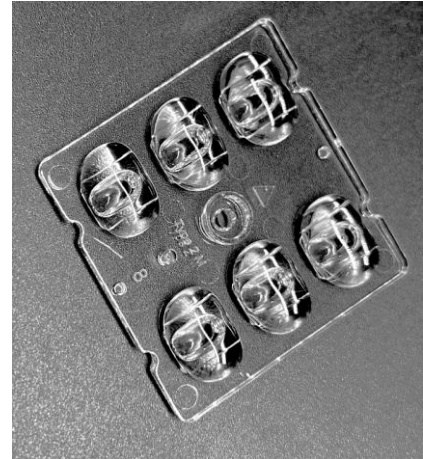
DATASHEET

S01.01.01.131_SS-50X50-6-T2M

Street Light Lens

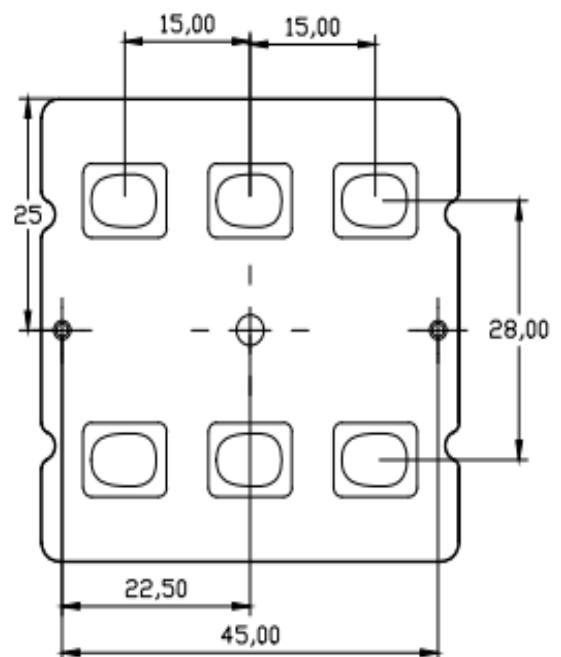
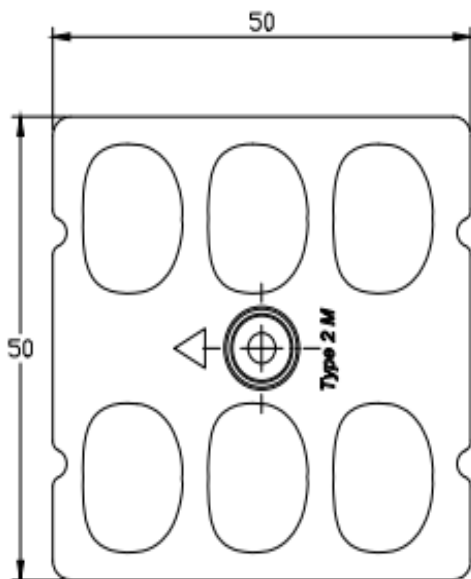
1.General Information

- ✓ Lens Material: PC
- ✓ Size: 50X50MM
- ✓ Beam angle: T2M (90x140°)
- ✓ Compatibility: 5050 (OSRAM/ LUMILEDS/ NICHIA)
- ✓ Efficiency: 96%
- ✓ Fasten: Screw
- ✓ IP class: N/A
- ✓ Seal: N/A
- ✓ RoHS: YES
- ✓ Color: Clear



2.MECHANICAL SPECIFICATION

UNIT:MM



3.OPTICAL DATA

1) Test Data

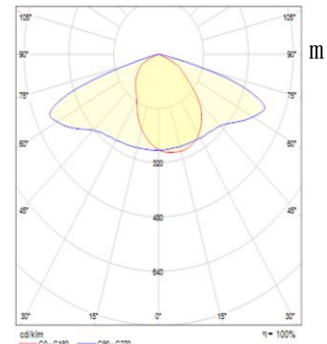
Brand: Luxeon

LED model: 5050 Round

Light colour: White

FWTM: H150.6° , V116.1°

FWHM: H141° , V87.6°



2) Simulation Data

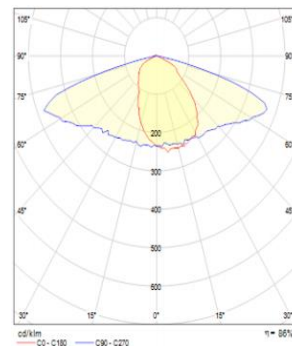
Brand: Cree

LED model: JR5050

Light colour: White

FWTM: H158.6°,V116.6°

FWHM: H147.5°,V80°



4.Usage and Maintenance

- 1) If necessary, clean lenses with mild soap, water and soft cloth.
- 2) Never use any commercial cleaning solvents on lenses, like alcohol.
- 3) Please handle lens with wearing gloves, skin oils may damage lens or its optical characteristic.

5.Note

Please test the data again before using. The chart data is for reference only.